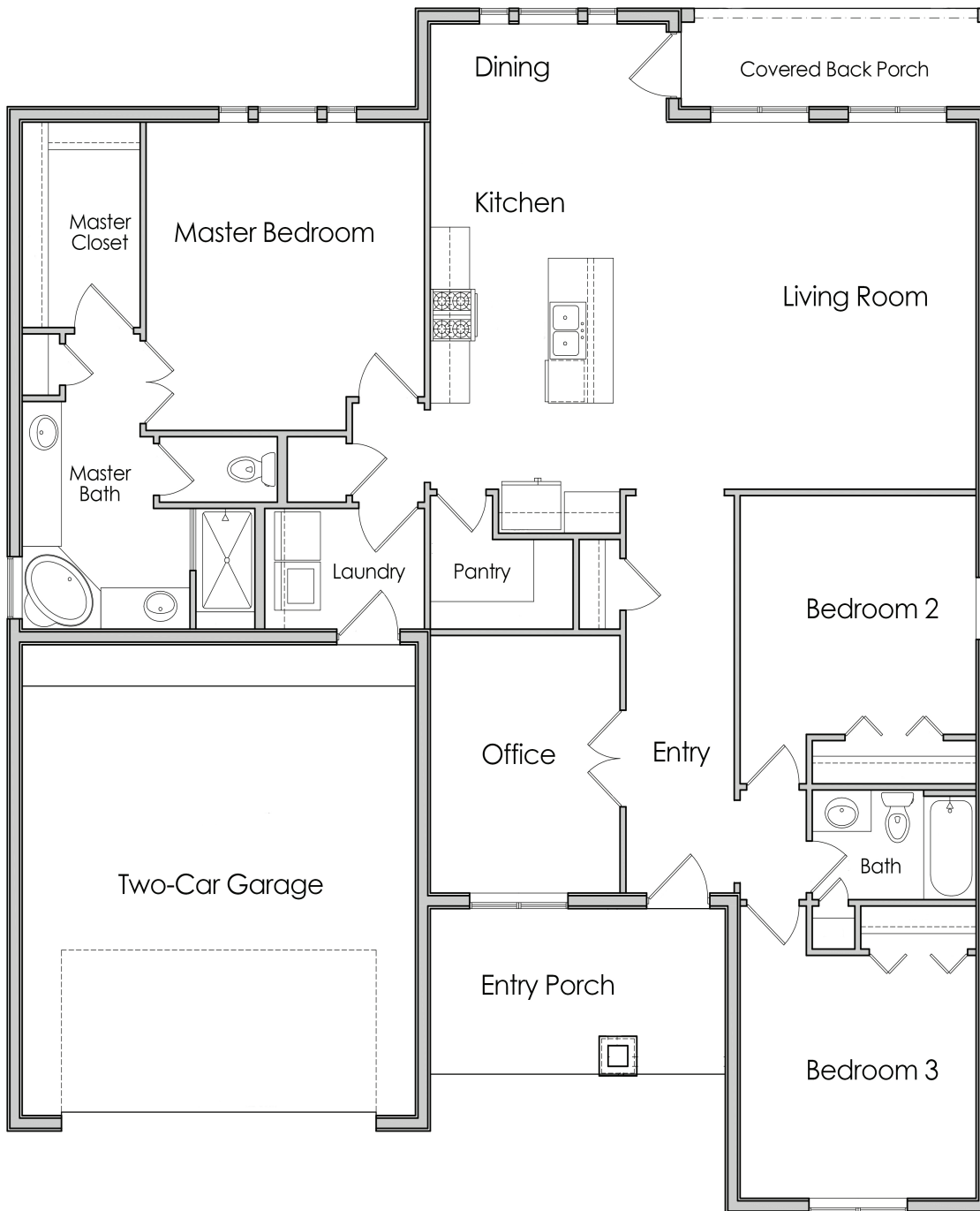


The Burleson
1931 Square Feet



- Granite Counter tops*
- Walk-in Closets
- Stainless Steel Appliances
- Smart Home Automation
- Solar Panels*
- Net Zero Energy Costs**

*Optional item
**Based on individual consumption and energy plan.



The Burleson

1931 Square Feet



The Burleson is the ultimate in efficiency, luxury and affordability. With a spacious floor-plan cleverly designed at 1,931 square feet you will enjoy such features as:

- 3 Bedrooms/2 Baths with 2-Car Garage
- Luxury Master Bath with Garden Tub and Separate Glass Shower
- Gourmet Island Kitchen with Granite Counter Tops* and Stainless Steel Appliances
- Indoor Laundry Room and Spacious Pantry
- Separate Office or Sitting Room
- Ample Closet Space with Huge Master Walk-in
- Covered Porches Front and Back with Contemporary, Craftsman Styling
- Solar Ready and Smart Home Automation to Eliminate Energy Bills!***



sales@solidgreenhomes.com
or call Jim Bledsoe, (512) 649-8255