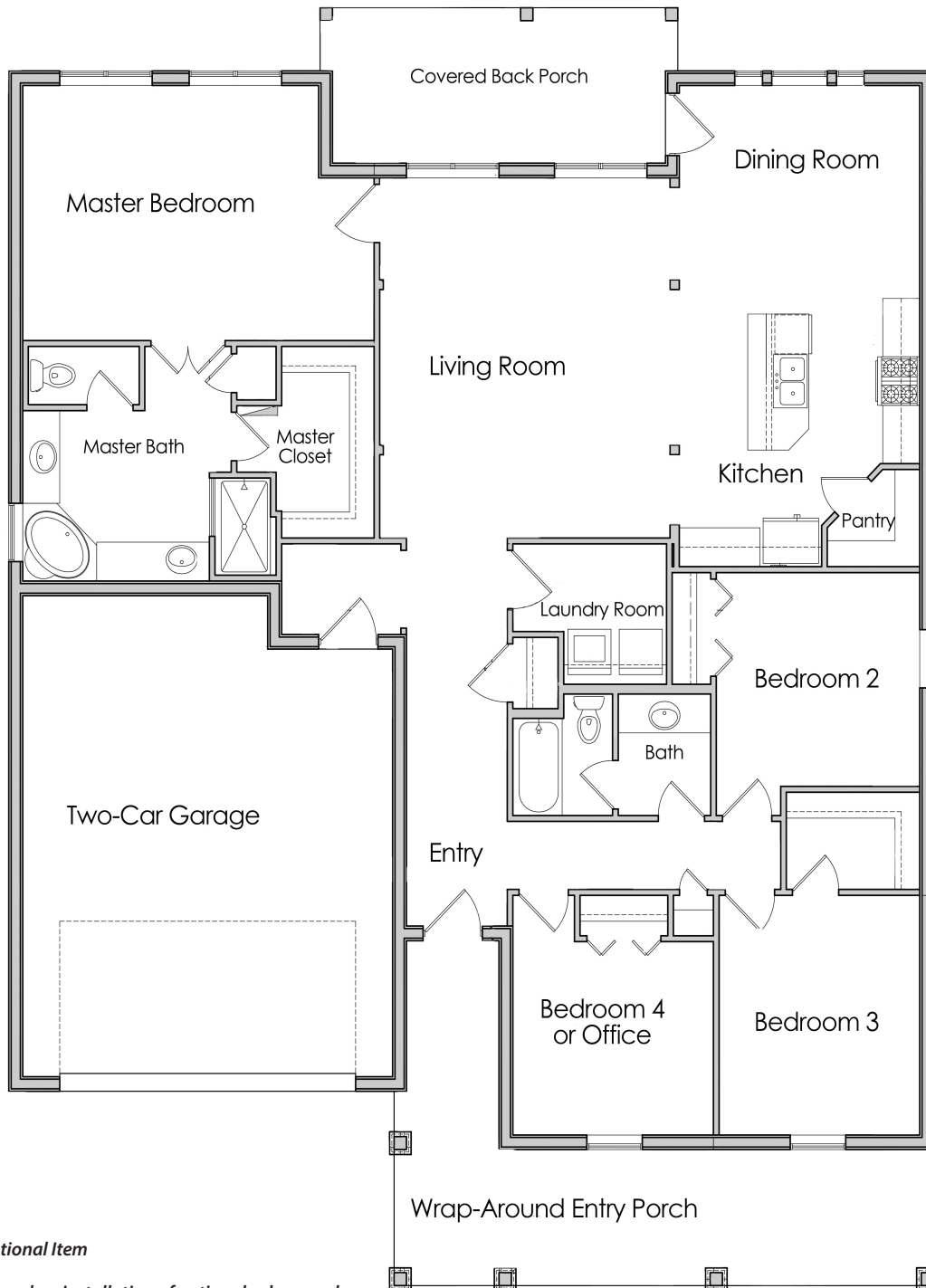


The Wallace 2,080 Square Feet



- Granite Counter Tops*
- Walk-in Closets
- Stainless Steel Appliances
- Smart Home Automation
- Solar Panels*
- Net Zero Energy Costs**

* Optional Item

** Based on installation of optional solar panels, individual consumption and energy plan



The Wallace 2,080 Square Feet



Boasting just over 2,000 square feet, The Wallace offers ample room for work and play with livable, designer features such as:

- 4 Bedrooms/2 Baths with 2-Car Garage
- Luxury Master Bath with Garden Tub and Separate Glass Shower
- Gourmet Island Kitchen with Granite Counter Tops* and Stainless Steel Appliances
- Oversized Indoor Laundry Room and Mud-Room Nook
- Ample Closet Space with Huge Master Walk-in
- Wrap Around Covered Front Porch
- Open Living/Dining/Kitchen Floor Plan
- Solar Ready and Smart Home Automation Eliminate Energy Bills!**



sales@solidgreenhomes.com
or call Jim Bledsoe, (512) 649-8255